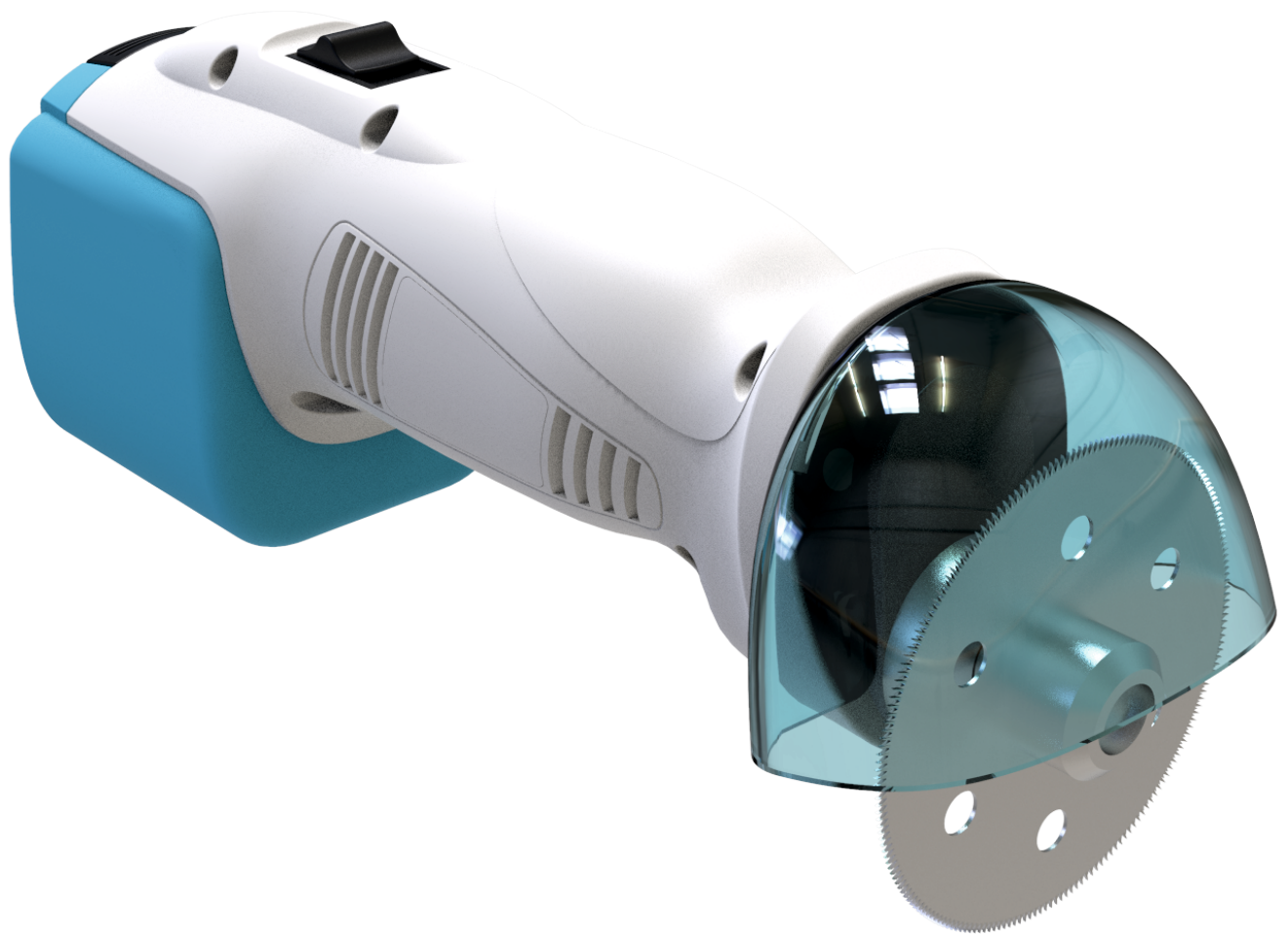




Please read these instructions carefully before using the device.



GOOD
medica

OSCILLATING PLASTER SAW



USER MANUAL

USER MANUAL

SAFE BLADE

Oscillating plaster saw



Please read these instructions carefully before using the device.

User Manual in English



The product name:

Oscillating plaster saw

Model:

SAFE BLADE

Manufacturer:

Good Medica Sp. z o.o.
ul. Ziemniaczana 15
52-127 Wrocław, Poland

Contents:

pages

- 3 - Introduction
- 3 - Information about the device
- 4 - Device parameters
- 5 - Starting the device
- 5 - Tightness verification and blade replacement
- 5 - Safety during use
- 8 - Prevention of allergies and injuries
- 8 - Transport, storage
- 9 - Cleaning and disinfection
- 9 - Common failures
- 10 - Information related to electromagnetic compatibility and environmental impact
- 10 - Labels
- 10 - Symbols Used
- 11 - Service

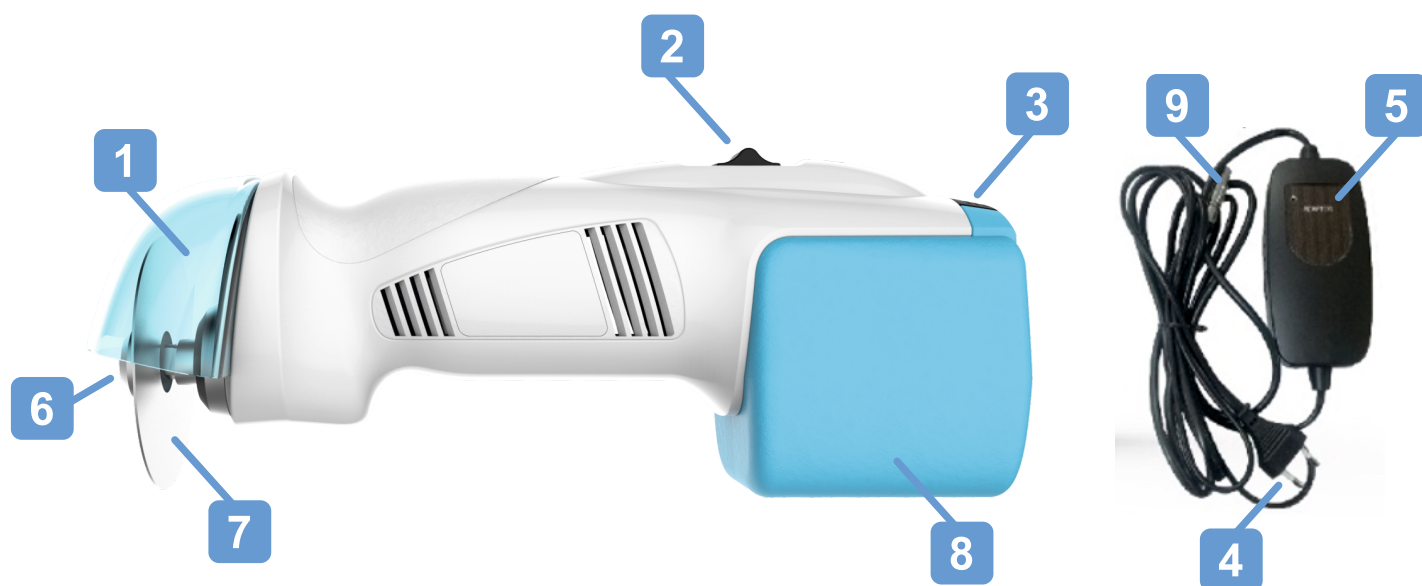
Introduction

Thank you for your trust and choosing the product of Good Medica Sp. z o. o. We guarantee that the SAFE BLADE oscillating plaster saw is a medical product of the highest quality that meets European standards, confirmed by the CE mark.

In order to use the full potential of the device and minimise the risk to the patient, please read the instructions for use. Non-compliance with the recommendations contained in the instructions may result in damage to the device or risk to the health and life of patients and operators.

Information about the device

The SAFE BLADE oscillating plaster saw is a mobile mechanised device for cutting plaster bandages and light synthetic plaster. Owing to the oscillating movements of the cutting disc, it is an extremely safe device for both the operator and the patient. The blade of the device moves in the range of 4° so that even when applied to the body, it does not hurt the skin surface. The device uses a battery-powered electric motor for its operation. The battery capacity is designed for a total of up to 5 hours of operation. The device is very handy, easy to use and clean. The accessory kit includes 3 different blades, an additional battery and power supply.



- | | |
|------------------|--------------------------|
| 1. Blade guard | 6. Blade tightening bolt |
| 2. On/off switch | 7. Blade |
| 3. Battery lock | 8. Battery |
| 4. Power plug | 9. Mains plug |
| 5. Power supply | |

Device parameters

Safety class	IB
Operating conditions	Ambient temperature: 5°C - 40°C Air humidity: 30% - 80% Atmospheric pressure: 700 hPa - 1060 hPa
Power supply	Saw power supply: 100 - 240 VAC 50/60 Hz Saw: 14.8 VA
Device power	95 W
Battery capacity	3200 mAh
Maximum battery operating time	5 h
Maximum blade rotation speed	12000 R.P.M
Blade movement range	4°
Operation noise	<90 dB
Storage conditions	Temperature: -25°C - 70°C Air humidity: ≤ 80% Atmospheric pressure: 700 hPa - 1060 hPa
Device dimensions	Height: 23 cm Width: 6.5 cm Depth: 9 cm
Device weight	1.5 kg
The kit consists of	The main unit with battery 1pc Blade kit 3 pcs Allen key 1 pc Battery 2 pcs Power supply 1 pc User manual 1 pc
Product lifetime	10 years



Note!

- Before each start, check the tightness of the blade bolt (photo 1, No. 6).
- During operation the oscillating saw must be held firmly in hand.
- Ventilation holes must be unobstructed.
- The blade must be sharp, not bent or cracked.
- Do not leave the device idle (without load) for a longer time.

First start-up and charging

Before the first start-up, charge the device battery with the power supply.

1. Connect the power supply plug (photo 1, No. 9) to the AC mains (power outlet).
2. Connect the power supply plug (photo 1, No. 4) to the saw outlet.
3. Charge the device for 12 hours.

Starting the device

1. Hold the saw firmly in your hand.
2. Slide the on/ off switch using the thumb of the other free hand, (photo 1, No. 2) to the position "I".

Switching off the device

1. After cutting the plaster bandage, immediately switch off the saw by sliding the on/off switch (photo 1, No. 2) to the position "O".

Tightness verification and blade replacement

Checking blade tightness

1. Using the Allen key included in the kit, check if the bolt is firmly (photo 1, No. 6) and clockwise tightened. The bolt should be firmly tightened.

Blade replacement

1. Remove the blade housing (photo 1, No. 1) by sliding it out.
2. Using the Allen key included in the kit, unscrew the bolt counter-clockwise (photo 1, No. 6).
3. Take out the bolt from the device.
4. Remove the old blade.
5. Install a new blade.
6. Tighten the bolt clockwise with the Allen key.
7. Slide the blade housing into its place (photo 1, No. 1).

Safety during use

The oscillating plaster saw is a ready-to-use product. It is forbidden to repair or make unauthorised changes in the device construction.



Note!

Removal of a plaster bandage or light synthetic plaster using an oscillating saw should be conducted in accordance with medical indications and should take place following a prior medical consultation. The device should be operated by trained personnel.

SAFETY INSTRUCTIONS

DANGER!

Danger means immediate threat. Failing to follow these instructions may result in death.

THREAT!

Threat means A threat to patient's safety. Failing to follow these instructions may result in serious injury and even death.

WARNING!

Warning means a dangerous situation, which may result in minor injuries to a patient and/or damage to the unit.



Risk!

Risk of explosion - the device may not be used in medical rooms where there is a risk of explosion. Risk of explosion can occur after contact with flammable anaesthetic agents or skin disinfectants.



Warning!

Hazards to the staff

Do not use the oscillating saw for any purpose other than cutting the plaster bandage.

The device may only be operated by a person familiar with the instructions for use.

Checking the technical condition

Before each use the user should check the condition of the device for safe use, in particular: housing integrity, power supply with a cord and blade mounting. In the event of damage, contact the service centre.

Avoiding hazards to patients

- Treatment with the use of an oscillating saw must not cause irritation.
- A patient should be fully conscious while using the device. When removing plaster in a patient being in a poor state of consciousness or unconscious, extreme caution should be kept since the patient is not be able to inform their ailments.
- The decision to use the device is made by a doctor.
- Do not use the device in a room without ventilation or sufficient light source.

Hazards to the environment

Do not allow children or pets to play near the device.

Risk of electric shock

To avoid the risk of electric shock, the following warnings must be strictly observed. Non-compliance can lead to a risk to life and health of the patient and/ or the operator of the oscillating plaster saw.

If it is necessary to transport the device in sub-zero temperatures, it should be left for approx. 2 hours at room temperature before starting operation.

The oscillating plaster saw can only be used in dry rooms at room temperature.

The oscillating plaster saw can only be connected to a correctly installed power outlet.

Disconnect the device from the power supply before cleaning and disinfecting.

When disconnecting the device, do not pull the power cord.

Make sure that the device and the power supply do not get wet. If wetting of the aforementioned components occurs, please contact the service centre (see page 11). Restarting is possible after checking the device in the service centre.

In the event of mechanical damage or incorrect operation of the device (e.g. excessive operation noise or excessive vibration), switch off the device immediately and contact the manufacturer service centre.

Device interference

The operation of the device may be affected by magnetic and electric fields.

When using an oscillating plaster saw, make sure that all other devices operating nearby meet the requirements of the electromagnetic compatibility.

Devices which are the source of electromagnetic radiation, i.e. X-ray equipment, MRI devices, radio transmitters and mobile phones can interfere with the device operation. Keep a safe distance from such devices. Before using the oscillating plaster saw, it is necessary to check its operation.

Do not use a oscillating plaster saw near a fire source.

The device should be on each side at least 30 cm away from other objects.
This distance ensures proper ventilation.

The device should be inspected at least once a year for possible damage.

Repairs should be carried out at the manufacturer service centre.

Prevention of allergies and injuries

Allergy to plastics - the person operating the device may suffer from symptoms of allergy.

People allergic to plastics should wear protective gloves. If allergic symptoms are still visible, it is recommended to stop using the device.

It is forbidden to switch on the saw with the Allen key inserted.

Wear safety goggles and a dust mask when using the oscillating saw.



Do not use the SAFE BLADE oscillating plaster saw while charging.

Transport, storage



NOTE!

During transport, the device must be carefully secured, packed into a cardboard box lined inside with a protective foam.

Transport and storage conditions:

- Storage temperature: -25°C - 70°C
- Air humidity: ≤ 80%
- Atmospheric pressure: 700 hPa - 1060 hPa

The device should be stored in adequate humidity to prevent corrosion.

Before using the oscillating plaster saw after prolonged storage or transport, check that all functions of the device work properly.

Do not expose the device to sunlight, excessive low or high temperatures.

The device should be cleaned and disinfected after each use with the use of non-alcohol wipes having disinfecting and washing properties, e.g. Sani-Cloth Active by Ecolab Sp. z o. o. Ready-to-use non-alcohol wipes are bactericidal, yeasticidal and mycobactericidal.

First disconnect the device from the power supply. The device must be switched off, the on/ off switch must be in the "O" position. Then remove the guard and remove the cutting blade. After each use, the blade and the bolt must be obligatory disinfected and the device body should be thoroughly wiped. If necessary, use more wipes.

If necessary, use a soft cotton cloth to wipe the device dry.



NOTE !

Damage to the device

To prevent damage, do not use disinfectants other than the abovementioned ones, especially gasoline or solvents, for cleaning. Do not clean switches or electrical contacts with excessively wet wipes.

To avoid discolouration on the device, only colourless disinfectants should be used.

Common failures

If the device does not start:

- The device is most likely discharged.
- Check the power cord and the power supply for mechanical damage.
- If the cord is not damaged, connect the device to a power outlet and charge for 8 hours.
- If the cord is damaged, contact the service centre.

Contact the service centre in case of:

- The device gets wet.
- Mechanical damage, i.e. fall from a height, etc.
- Doubts concerning the device operation.

In the event of damage to the device, stop its operation and contact the manufacturer for repair.

I. Electromagnetic compatibility

The device is designed to provide resistance to external electromagnetic factors. However, during operation, the device generates electromagnetic waves that may affect the operation of other devices.

II. Care for the environment

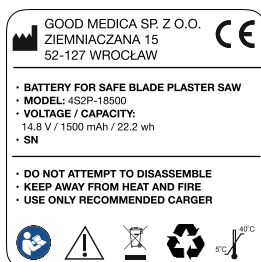
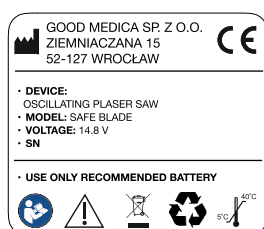
The product can be fully utilised in accordance with the applicable regulations of the given country (electronic, metal and plastic components).



Note!

The device should not be started near other devices. If they must be used close to each other, observe that the device is operating properly. The recommended minimum distance from other devices is 30 cm.

Labels



Symbols Used

Symbol	Description	Symbol	Description
	Follow/refer to the user manual		CE Mark
	Warning, danger, threat		Manufacturer
	Follow local provisions regarding utilization of equipment, packages and additions		Recycling
	Minimum and maximum temperature of storage areas		

Modifications to the device are not allowed.

The SAFE BLADE oscillating plaster saw does not contain any internal service parts for the user. Do not uninstall, modify or repair internal components. Incorrect or poorly maintained device may cause a threat to the user and the patient.

Every SAFE BLADE device should be reviewed once a year in Good Medica Sp. z o. o. service centre. In the event of any failures please contact the service centre.

GOOD MEDICA SP. Z O.O.

ul. Ziemniaczana 15
52-127 Wrocław, Poland

☎ +48 71 715 64 97

✉ serwis@goodmedica.pl

NIP: 701-037-24-51
REGON: 146578763
KRS: 0000453965
Issue II of 19.02.2020

NOTES:

**Good Medica Sp. z o.o.**

ul. Ziemniaczana 15
52-127 Wrocław, Poland
☎ +48 71 715 64 97

✉ office@goodmedica.pl
🌐 www.goodmedica.pl